



RCR Technology Corporate Overview

The RCR Technology Corporation, Inc. (RCR), founded in 1997, is a minority-owned, innovative, information-technology consulting company headquartered in Indianapolis, Ind. RCR has an expansive portfolio of industry-relevant services and capabilities with a core competency of delivering data warehouse and business intelligence solutions with deep-sector expertise around application development, systems integration, and data conversion.

The breadth and depth of RCR public sector expertise and a sector-specific approach to effectively align technology with its clients' strategic objectives have resulted in the consistent creation of innovative value-added client solutions and business outcomes exceeding expectations. To more effectively meet with the unique challenges of our public sector clients, RCR formed a Public Sector Practice Group (PSPG), consisting of 130 dedicated senior-level consultants with more than 2,000 years of combined work experience within the public sector.

Our PSPG dynamic continues to provide superior service to local, state and federal government in 12 states and the District of Columbia since its inception more than 15 years ago.

RCR's demonstrated thought leadership innovations and commitment to supporting our clients has resulted in significant growth, both locally and nationally in the markets that we serve.

To illustrate, some of our clients include public employee pension funds, social service agencies and workforce development organizations, all of whom require large, complex information systems to provide critical resources to their clients and beneficiaries. RCR has nurtured and expanded public-private partnerships to improve government efficiencies (cost savings and customer service time improvements), to reduce the administrative burden and to preserve valuable public resources.

To support the strategic scope and scale of its clients' needs, RCR has forged strategic partnerships with many large leading information technology and professional services companies.

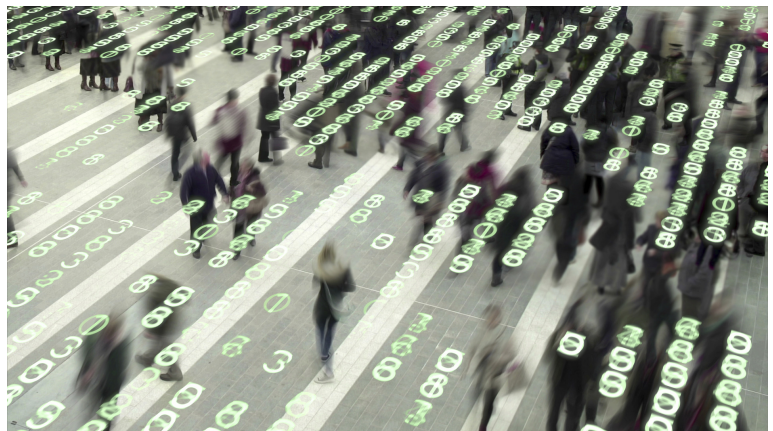
We have worked successfully with such companies as HP, ACS/Xerox, Deloitte, KMPG, FirstData, Accenture, Brocade, Dell, Cisco, Motorola and Merú. Additionally, RCR has close working relationships and expertise around a number of industry-standard solution providers. Among them are Oracle, Microsoft, SAP, SAS and IBM to name a few. The RCR partner model is flexible as we can partner with other system integrators or with the agencies directly to provide high-value, cost-effective solutions to meet the ever-changing needs of our clients.

Our customers include Fortune 500 corporations, technology-driven, small- and middle-market companies, non-for-profit organizations, public sector entities that include small local municipalities, along with city, state and federal government agencies.

RCR has office locations strategically located to serve its current customer base in Indianapolis, Columbus, Ohio, Atlanta, Ga., Baltimore, Md., and the Washington D.C. metro area; supporting over 160 employees.

RCR Technology and the State of Indiana

- In 1997, RCR Technology was contracted by the State of Indiana to architect, build and support an enterprise data warehouse for inter-agency reporting required by the Modern Federal Report to support Federal Welfare Reform at the State level. This successfully-executed project resulted in the state receiving in excess of \$70 million in incremental performance bonus funds. RCR continues to support and service that original data warehouse.
- Developed a hybrid solution for the Indiana Eligibility Modernization Project (IEMP) to upgrade the delivery of the Supplemental Nutrition Assistance Program (SNAP), Temporary Assistance for Needy Families (TANF) and Medicaid services for needy citizens.
- Implemented IT software solution for the Bureau of Motor Vehicles in Indiana resulting in expedited service times and significant cost savings.
- Supported the PMO for the new Indianapolis Airport Project. Currently providing services to support IT Infrastructure and network at the airport.
- Led Ivy Technical Community College project, the nation's largest community college system, to architect, implement and support network environment improvements to support 18 regional campuses.
- Implemented the Behavior Health Assessment System (BHAS®) for federally-mandated tracking systems for Children and Adolescent Needs and Strengths (CANS) and Adult Needs and Strengths Assessment (ANSA). This interactive, web-based reporting tool for state health, education and court reporting entities is novel and value based.
- Led a project for Fort Wayne Community Schools in Fort Wayne, Ind. to architect implement and support network environment to support school system.
- Technology Partner for the Indiana Black Expo annual event that supports all event operations including Job Fair and Career Development activities. This marquee event draws more than 250,000 participants annually. RCR has been the technology partner for over 7 years.
- Super Bowl XLVI (2012): Co-Technology partner with the State of Indiana IOT to support the technology needs of the Super Bowl 2012 Host Committee. RCR provided the end-user support at various levels for more than 250 volunteers performing various duties in support of the event. Additionally, worked closely with several key partners including AT&T, HP, ChaCha, and Samsung on a number of key initiatives.
- Super Bowl XLVII (2013): As a result of work done for the Host Committee during Super Bowl XLVI (2012), RCR was asked to work with the New Orleans Super Bowl 2013 Host Committee to architect, plan and support an event rich in the use of technology, including software application development, use of social media, network infrastructure, deployment and support of multiple end user devices including digital signage and wireless print capabilities.



Portfolio of Products and Services

- Data Warehouse:
 - Architecture design, Implementation, Data Cleansing, Integration, Data Conversion
- Business Intelligence:
 - Analytics, Dashboarding, Predictive Modeling
- Application Systems
- Application Development
 - .Net (Visual Basic and ASP.Net)
 - Visual C++
 - Java
 - Perl
 - Cold Fusion
- Business Analyst with deep Eligibility expertise
- IVR/Telephony
- Project Management
- Database Management
- Technical and Project Management Quality Assurance
- End User Training:
 - Course Development and Delivery
- Network and Data Communications:
 - Design, Planning and Implementation
- Network Security Certifications
- Operations Management
- Software Lifecycle Development
- End User Call Center Support:
 - Level 1, 2 and 3
- Strategic Partnerships with industry-leading global Technology companies such as HP, Dell, Microsoft, IBM, Oracle, SAS and others

